



Beira, Mozambique

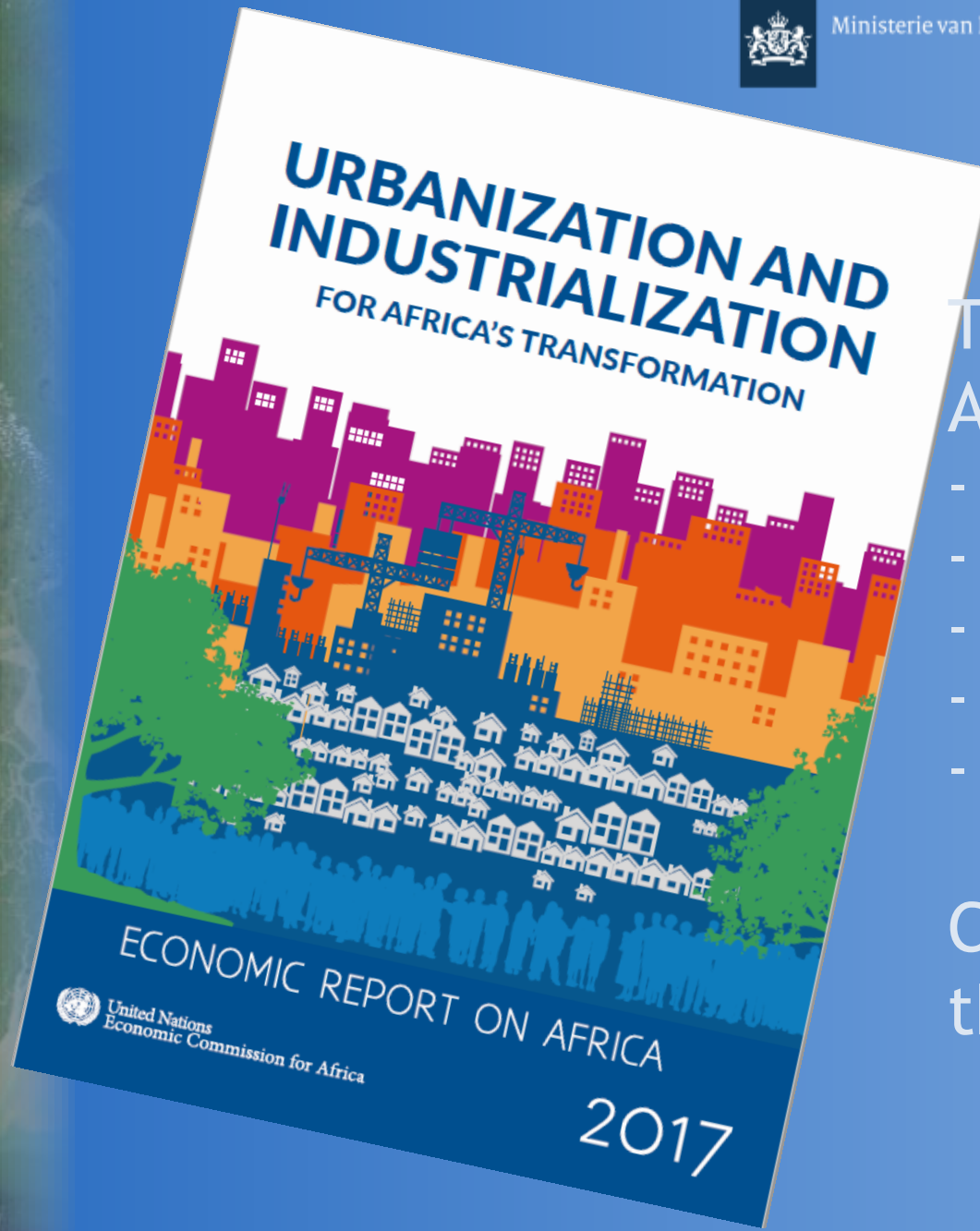


Collaborative action - for a liveable, resilient city

Maarten Gischler

Netherlands Ministry of Foreign Affairs

August 29th, 2017



The bigger picture of Africa's urbanisation:

- Accelerating
- Largely informal
- Low productivity
- Large infra gaps
- Weak institutions

Can Beira do better than just cope?



Beira's urban development 'happens': informality is its standard, formality is ours – where do we meet?



pbl.nl

- Formeel deel stedelijk gebied
- Informeel deel stedelijk gebied



60% of Beira's population live on 1 - 3 USD/day, this group constitutes mayor's electoral base

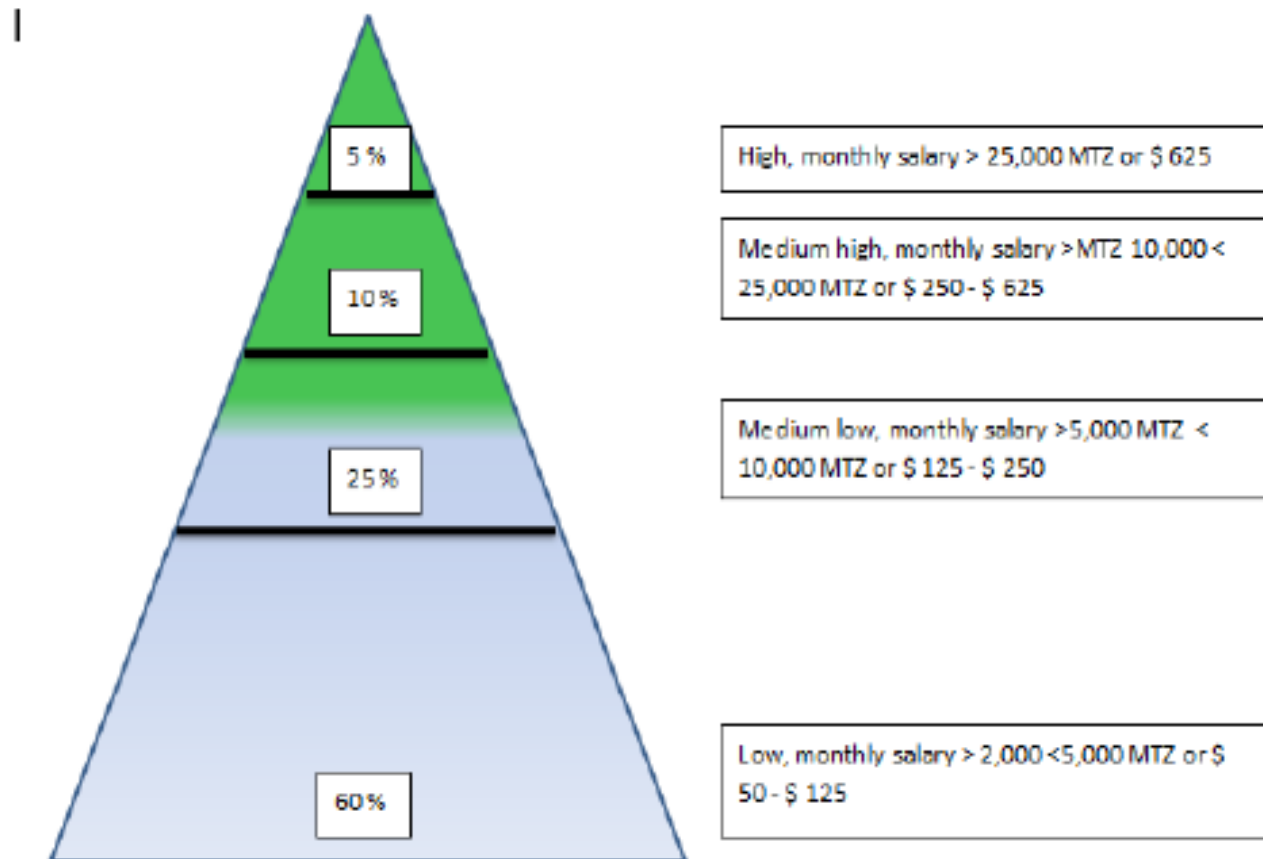


Figure 7: Income pyramid Beira June 2015



Informal development defies basic water system realities @ high cost
Water = relevant entry point to better “organise” urban informality





A wealth of actors (local, provincial, national), very busy doing their own thing...

No shortage of development partners

- World Bank, KFW, AFD, DfID, Dutch, EU, etc.

Collaborative action has long been a bridge too far

Beira Master Plan process 2011 - 2026

- Platform for collaborative action - with champion
- Planning, project prep., mobilizing finance
- Implementation support

Beira development vision 2035 – Let's put pieces on 1 chess board, including sanitation, and play



Port access road - NL



Waste water treatment plant - EU



Expansion of quays – CFM/Cornelder



Chiveve urban drainage and green park KfW-WB



Strengthening performance of Beira municipality including land registry



Munhava industrial zone – LDC/NL



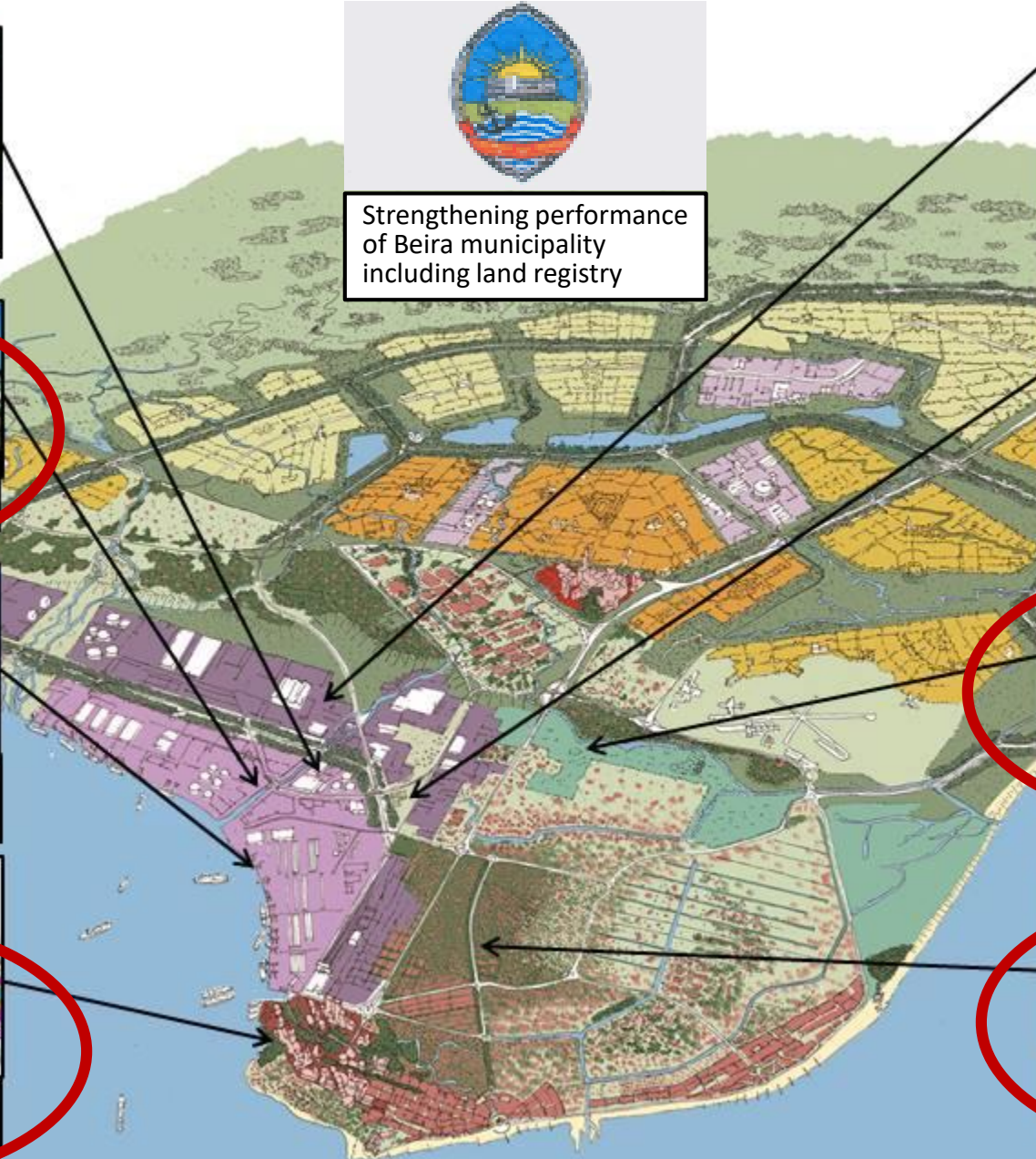
FIPAG water – WB / NL



Maraza low cost resident area – LDC/NL



Urban drainage phase 1 – World Bank





Ministerie v

Drivers of progress:

- political leadership mayor (3x)
- mutual trust in long term partnership
- effective process facilitator
- flexibility to meander in response to opportunity
- transaction focus
- income generating potential
- private sector “early movers” (REALL, FMO, dredgers, port operator)
- public sector “early movers” (port)

A DE INVESTIM

17 e 18 de Set



NOVA ESTRADA DE ACESSO AO PORTO



EXPANSÃO DO CAIS E ZONA INDUSTRIAL



REABILITAÇÃO DOS ECOSISTEMAS



DEFESA COSTEIRA

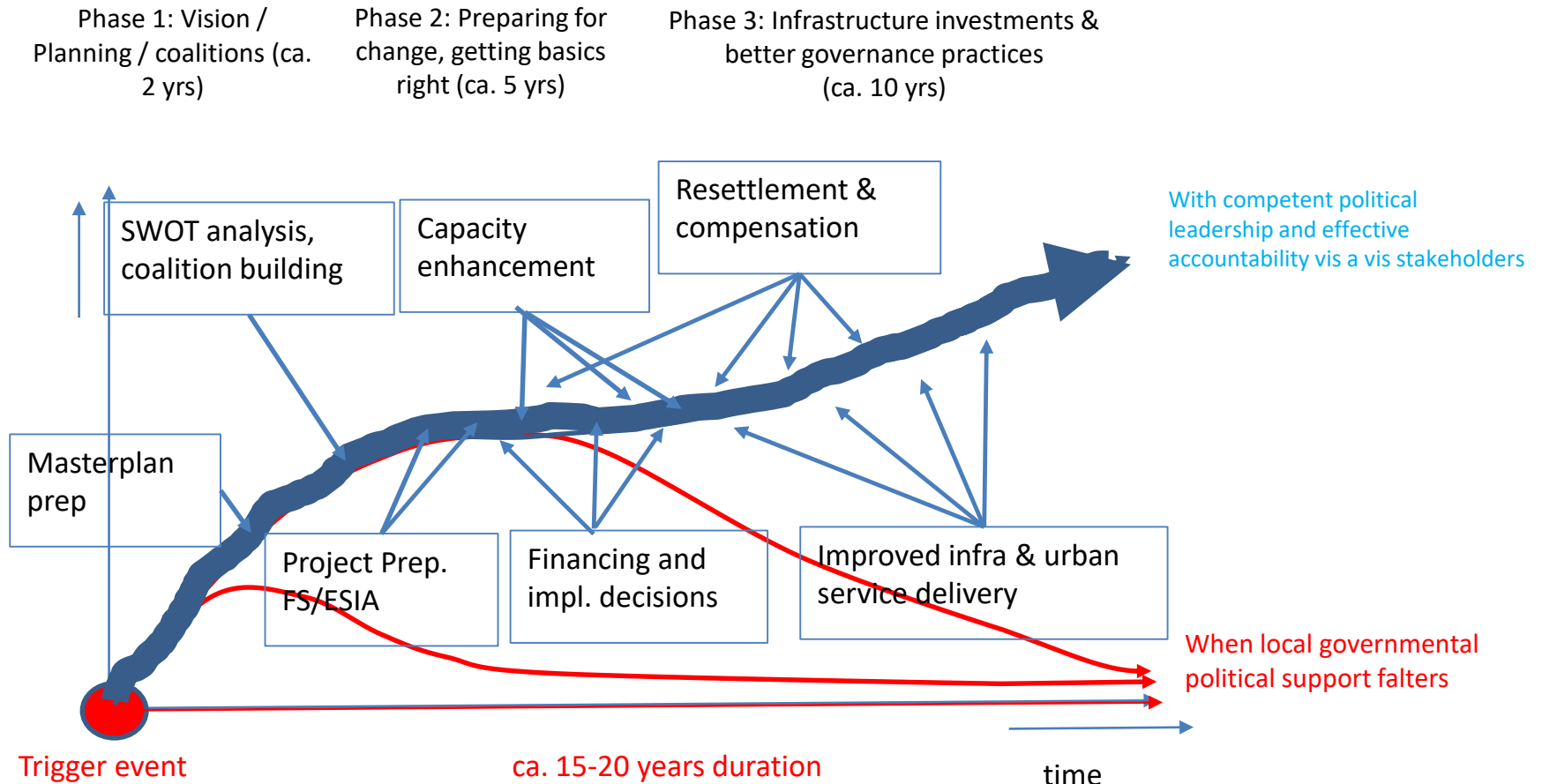




On-the-job strengthening of municipal organization

	Strategy & policy	Organisation & process	Planning & Control	Information technology	People & culture
5 – Network	Network strategy	Network orientation	Chain control	Network information system	Human capital management
4 – System	Integrated strategy	System orientation	Management control	Integral information system	Human resources management
3 – Process	Department strategy	Process orientation	Financial control	Island information system	Personnel policy
2 – Basic	Basic strategy	Functional orientation	Cost control	Scattered information system	Personnel administration
1 – Informal	Non-discernible strategy	Random organisation	Random, Non-transparency	Random, or absent info systems	Random attribution of capacity

What are the prospects for replication?





What could global initiative on city-wide inclusive sanitation unlock...?

- Business cases/models for inclusive serv. delivery
- Billing models
- Pipeline of investments
- Appetite to fill financing gaps/access to finance
- Fixes for infra gaps
- improved livelihoods
- peer to peer learning

But urban sanitation may not advance in isolation...,
latch on to broader process: so welcome to Beira!!